



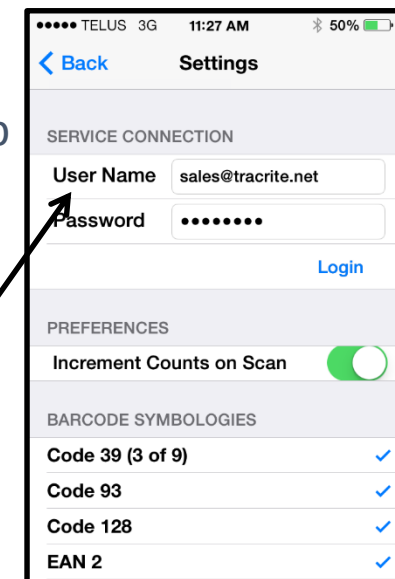
OC Mobile – Inventory Getting Started Guide

Installation

Note: To Run OCMobile – Inventory you need to have the latest version of Optimum Control Professional or Premier installed on your PC.

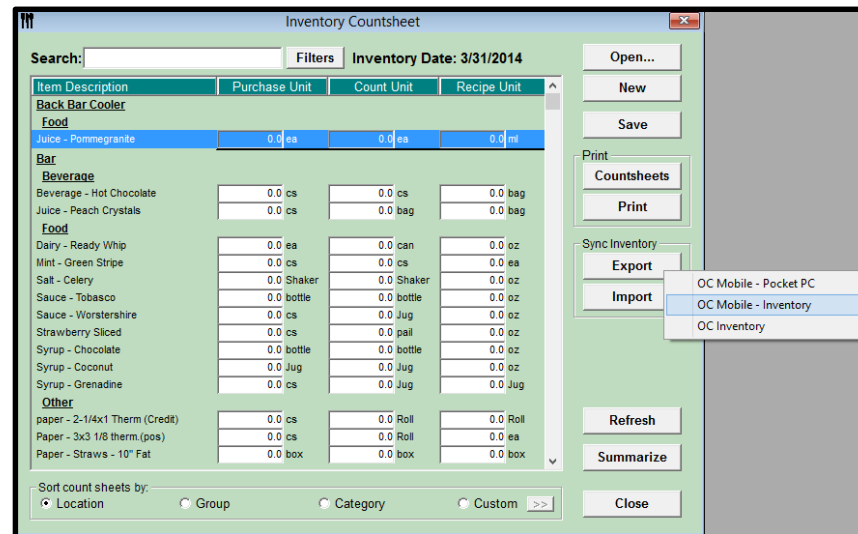
- Go to the Apple App Store and search for OC Mobile to install the application on any Apple iPad (2 or newer), iPad Mini, iPhone (4, 4S, 5, 5C, 5S), or iPod Touch (5th Generation).
- On your Optimum Control PC go to <http://restaurantvision.com/ocmobile-inventory.exe> to download the OC Mobile – Inventory installer.
- Call our office at 1-888-798-5555 to set your username and password.
- Once your username and password has been set up go into the OC Mobile – Inventory App, tap Settings, enter your username and password, click **Login**. You will notice in the settings page it lists when your subscription ends and the number of devices available.

This is the user name and password that we create for you. Not your OC credentials.




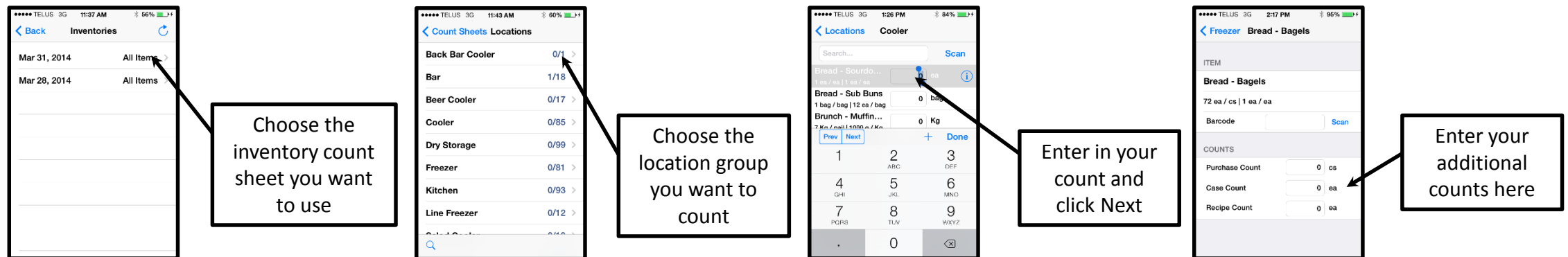
Exporting Inventory Count Sheets

- In Optimum Control, create a new inventory count sheet, select Export, OCMobile-Inventory. You will be asked if you are sure you want to export your count sheet. Click Yes. You will be required to enter your username (email) and password.
- The Uploader window will appear.



Entering Counts

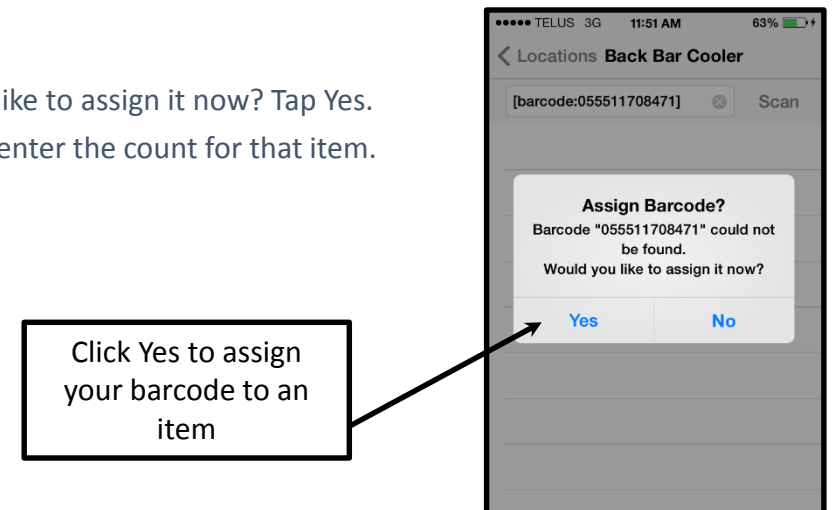
- Once the uploader has completed go into your OCMobile – Inventory App. tap Enter. Tap the date of the count sheet that you have exported with the items that you selected to be counted. Note: Depending on your device, load times may vary.
- Once it has loaded you see a screen with all of your items broken down into locations.
- Select the location that you'd like to enter counts for.
- Enter the count for each item and tap Next. The default count is **Count Unit**, to enter a count as Purchase Unit or Recipe Unit tap the  button. You will have the option to enter your amount as Purchase, Count or Recipe Unit. **Note:** The Purchase, Count and Recipe Units all appear in the main window on iPads.
- Once you have completed a location tap Done. Tap on Locations to go back to the menu.
- You can search for specific items on the locations screen or in specific locations.



Scanning Bar Codes

Note: To scan bar codes you must activate the bar codes options. Go back to the Main Page, tap Settings. Check off all the bar codes that you wish to use. If you are unsure which bar codes you use you may check them all off.

- You will use your camera to scan barcodes of items that appear on the inventory count sheet.
- If you would like to assign a barcode to an item, locate your item in the App, tap the ⓘ button. You will see a field for barcode. Tap Scan, once the scanner reads the barcode it will automatically assign the barcode to that item.
- You can also scan a barcode and then associate it to an item.
 - Tap the scan button at the top of the Location Count window.
 - Scan your barcode. A message will appear that your barcode could not be found. Would you like to assign it now? Tap Yes.
 - Assign the barcode to an item in that location. Click Assign Barcode at the top. Then you can enter the count for that item.



Importing Inventory Count Sheet

- In the App, tap the upload button on the count sheet window to upload your count sheet to the web.
- In the inventory window on your Optimum Control PC click on Import | OCMobile-Inventory.
- You will have the option:
 - Overwrite the count sheet that you already have (this is your overwrite your blank count sheet or any counts you may have entered. Please note that you can not undo this afterwards.)
 - Add imported counts to existing count sheet (if you have entered some counts in already this will add to your existing counts)
 - Cancel the import

