

## FOOD & RECIPE COSTING

*It's all about maximizing your bottom line!*

### Designed for Easy Setup

- Determine the exact unit cost for every case size purchased
- Setup case sizes by answering a few simple questions
- Yield trimmed items without creating a recipe
- Use duplicate function for similar items

**Items - Buns-Kaiser**

**Core Information**

Description: Buns-Kaiser Key Inventory Item   
 Inventory Group: Bread (Food) Actualize Usage Values   
 Main Location: Back Storage CL Account: Food (Food)  
 How is it used in recipes? each

**Case Information**

Supplier: Freds Food Supply Order Code: 908018  
 Case Desc: Darcod:   
 Spec/Brand: Group (opt.):   
 Purchase Price: \$2.89 per case Price Incl. Tax Grp:   
 Adjusted Case Cost: \$2.89 per cs. Tax Grp:   
 How do you report on this item? by the each  
 How many ea. are in a cs.? 10,000 Accept Dids   
 How many ea. are in a ea.? 1,000 Yield %: 100.00%  
 Additional Suppliers or Case Sizes Actual Cost Per ea.: \$0.1606

Qty On Hand: 36,000 ea. Reorder Level  
 Current Value: \$5.78 Min: 0.67 cs. = 12.00 ea.  
 Last Purchased: 3/19/2009 Max: 0.67 cs. = 12.00 ea.  
 Comments/Notes:

**ITEMS**

Open...  
 New  
 Duplicate  
 Save  
 Secondary  
 Close

### Know All Your Recipe Costs

- Indicate the expected yield of each prep and batch recipe
- Find the true cost per portion for all recipes
- Include detailed preparation instructions
- Add sub-recipes as ingredients

**PREP RECIPE**

Description: Chili Prep  
 Physical Yield: 200.00 uom ounces  
 Barcode:   
 Include on Count Sheets   
 Storage Location: Cooks Line  
 Inventory Group: Food (Food)  
 Actual Cost per oz: \$0.0692  
 Prep Recipe:  << double click here  
 Shelf Life:

**Ingredient(s)**

Item	Qty	UOM	Cost
Onions	12,000	oz.	\$0.5532
Celery	6,000	oz.	\$0.6120
Kidney Beans	18,000	oz.	\$0.5544
Tomato Paste	8,000	oz.	\$0.3496
Roux-white	6,000	oz.	\$0.8682
Ground Beef	64,000	oz.	\$6.2336
Chili Powder	4,000	oz.	\$1.4976
Carrots	6,000	oz.	\$0.2436
Water	32,000	oz.	\$0.0000
Tomatoes-canned	100,000	oz.	\$2.9200
<b>Total:</b>			<b>\$13.8322</b>

**Locations**

Secondary  
 Close

### Optimize Profitability

- Calculate selling price based on target cost percentage
- Link recipes to your POS system to identify theoretical usages
- Recipe costs are updated as ingredient prices change

**PRODUCT RECIPE**

Description: Club House Sand  
 POS ID#:   
 POS Descrip: Club House Sand  
 Sales Group: Food (Food)  
 Barcode:   
 Actual Product Cost: \$1.7415

Selling Price: \$4.50  
 Gross Margin: \$2.76  
 Cost Percent: 38.70%  
 Gross Profit % (GP%): 61.30%  
 Tax Group:   
 Selling Price Inc. Tax: \$4.50

Recipe:  << double click here  
 Comments:

**Ingredient(s)**

Item	Qty	UOM	Cost
White Bread	1,500	Slice	\$0.1296
Ham Sliced	2,000	oz.	\$0.2112
Tomatoes-Sliced	2,000	Slice	\$0.0510
Cheese-Mozzarella	0,600	oz.	\$0.0992
Turkey Breast-smoked	2,000	oz.	\$0.5750
Whole Wheat Bread	1,600	Slice	\$0.1296
Mayonnaise	1,000	oz.	\$0.0913
Sliced bacon	2,000	oz.	\$0.2614
Lettuce-Shredded	1,000	oz.	\$0.0588
Cheese White cheddar	0,600	oz.	\$0.1344
<b>Total:</b>			<b>\$1.7415</b>

Note: Construct Product here to obtain cost. When complete, set the "Selling Price"

**Locations**

Secondary  
 Close

Call us today at **1-888-798-5555** to order **OC Pro** and **TAKE CONTROL** with **OPTIMUM CONTROL**.

108 Regent Ave East  
 Winnipeg, MB  
 R2C 0C1 Canada

www.tracrite.net  
 sales@tracrite.net  
 1-888-798-5555



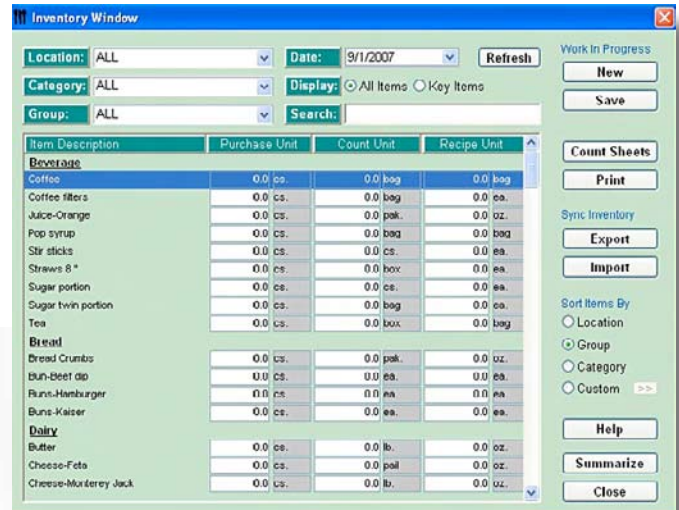
# OPTIMUM CONTROL

# INVENTORY

*It's all about saving you time and making inventory counting easier!*

## Fits Your Operation's Needs

- Count inventory by full case, split case and even recipe units
- Enter counts for as many locations per item as needed
- Customize count sheets to match your storage locations
- Format count sheets by location, group or even category



## Simplified Inventory Counting

- Count one or more case sizes for each item
- Detail amounts of batch recipes on hand
- Perpetual counts stored for non-key items
- Import counts from a mobile device

108 Regent Ave East  
Winnipeg, MB  
R2C 0C1 Canada

www.tracrite.net  
sales@tracrite.net  
1-888-798-5555

Item Description	Purchase Units	Count Units	Recipe Units	Count Parameters
<b>Back Storage</b>				
Flour-All purpose	cs.	lb.	oz.	50 lb. / cs. and 16 oz. / lb.
Buns-Kaiser	cs.	ea.	ea.	18 ea. / cs. and 1 ea. / ea.
Herbs-Fresh	cs.	oz.	oz.	4 oz. / cs. and 1 oz. / oz.
Coffee	cs.	bag	bag	64 bag / cs. and 1 bag / bag
Mustard-Colman's Dry	cs.	Jar	tsp	1 Jar / cs. and 60 tsp / Jar
Pepper-Black	cs.	lb.	oz.	5 lb. / cs. and 16 oz. / lb.
Pepper-White	cs.	lb.	oz.	5 lb. / cs. and 16 oz. / lb.
Pop syrup	cs.	bag	bag	1 bag / cs. and 1 bag / bag
Rice-Long Grain	cs.	lb.	oz.	25 lb. / cs. and 16 oz. / lb.
Tea	cs.	box	bag	1 box / cs. and 250 bag / box
Tomato Paste	cs.	can	oz.	6 can / cs. and 100 oz. / can
Bun-Beef dip	cs.	ea.	ea.	12 ea. / cs. and 1 ea. / ea.
CROUTONS	cs.	bag	oz.	16 bag / cs. and 16 oz. / bag
Black Beans	bag	bag	oz.	1 bag / bag and 80 oz. / bag
<b>Bar Storage</b>				
Vodka	bt 750	Liter	oz.	0.75 Liter / bt 750 and 34.66 oz. / Liter
Cherries-Marachino	cs.	Jar	ea.	2 Jar / cs. and 400 ea. / Jar

## Accurate, Yet Forgiving

- Re-date an inventory entered for the wrong date
- Adjust counts with full audit history
- Value inventory using FIFO, Last Cost or Average Cost
- Review counts and values before finalizing

Call us today at **1-888-798-5555** to order **OC Pro** and **TAKE CONTROL** with **OPTIMUM CONTROL**.

# OPTIMUM CONTROL

108 Regent Ave East  
Winnipeg, MB  
R2C 0C1 Canada

www.tracrite.net  
sales@tracrite.net  
1-888-798-5555

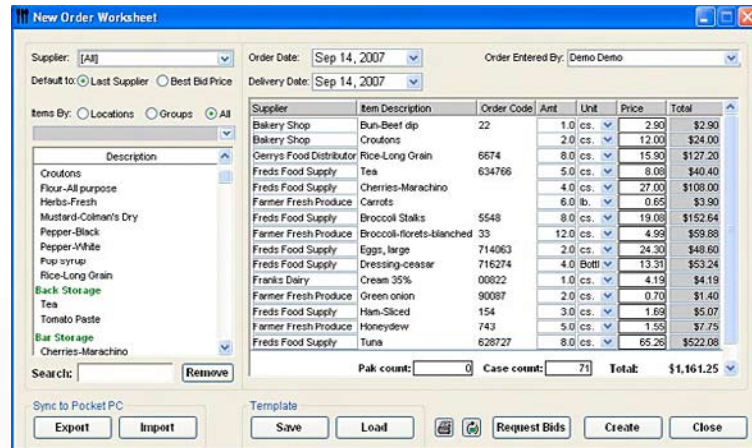


# ORDERING

*It's all about making ordering easier!*

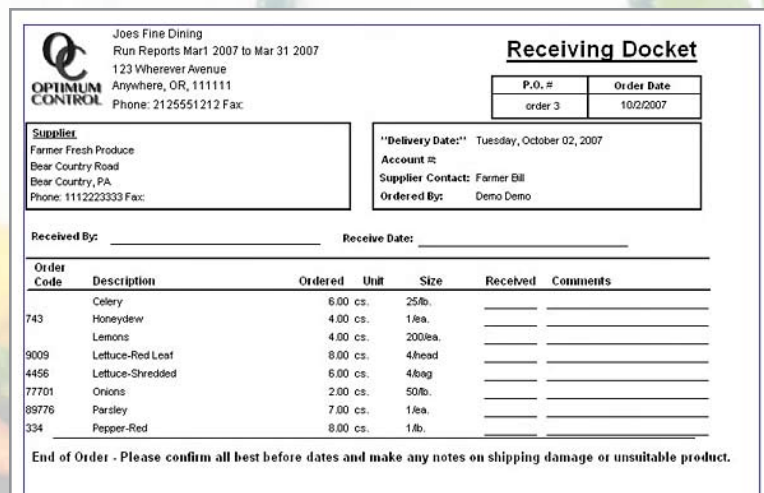
## Save Time Creating Orders

- Create templates for commonly ordered items
- Order from multiple suppliers at once
- Export orders to many popular suppliers
- Request bids from all suppliers simultaneously



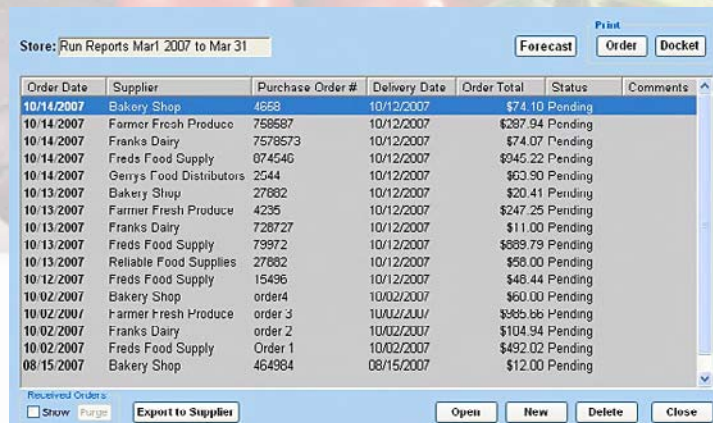
## Make Decisions that Save Money

- Pick suppliers based on last supplier or best bid prices
- Track bids on every case size purchasable
- Verify orders with a receiving docket
- Choose the correct case size for the order



## Ordering Only What's Needed

- Create forecasted orders based on per day usage, sales volume or preset par levels
- Order by full or split cases
- Generate purchase orders and receiving dockets to verify stock ordered to received



Call us today at **1-888-798-5555** to order **OC Pro** and **TAKE CONTROL** with **OPTIMUM CONTROL**.

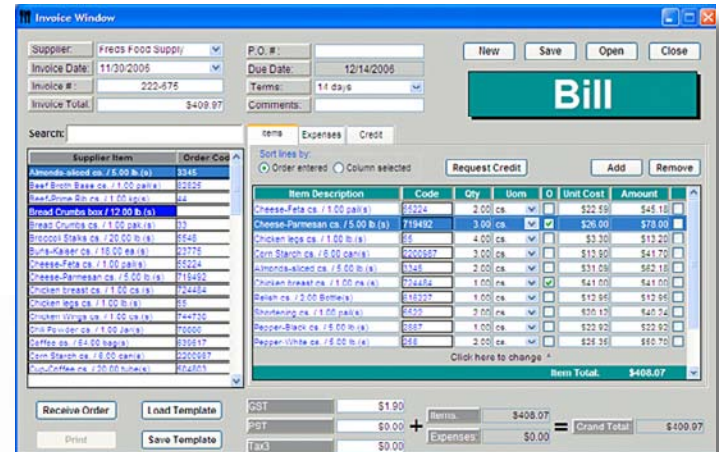
# OPTIMUM CONTROL

# PURCHASING

*It's all about saving you money and making purchasing easier!*

## Simplify Your Purchasing

- Update or overwrite prices as you enter the invoice
- Create an invoice by receiving an order
- Export purchase transactions to many popular accounting systems
- Request a credit for returned stock



## Get Results That Make Sense

- Apply taxes and adjustments to the cost of purchased items
- Update stock levels instantly
- Know that an invoice will only save when balanced
- Price changes flow through to all recipes

JOES FINE DINING (JOES)

### Purchases by Item Detail

From: Tuesday, July 01, 2008  
To: Wednesday, December 31, 2008

Description/Received from	Date	Invoice Number	Qty Received	Unit Price	Credit Requested?	Added to Stock	Avg Unit Price	Total Price	Avg Unit Cost	Total Cost
<b>Food Sales</b>										
<b>Produce</b>										
Strawberries Fresh	10/14/2008	489046	2,000 pint	\$2.33		2,000 pint	\$2.33	\$4.66	\$2.3300	\$4.66
Jimmes Grocers	10/20/2008	489962	2,000 pint	\$2.21		2,000 pint	\$2.21	\$4.42	\$2.2100	\$4.42
			4,000 pint	\$2.27		4,000 pint	\$2.27	\$11.08	\$2.2700	\$11.08
Tomato 616	10/13/2008	487819	1,000 ea.	\$18.35		25.0 lb.	\$0.73	\$18.35	\$0.7340	\$18.35
Jimmes Grocers	10/20/2008	489962	2,000 ea.	\$22.00		50.0 lb.	\$0.88	\$44.00	\$0.8800	\$44.00
Jimmes Grocers	10/22/2008	490590	1,000 ea.	\$19.40		25.0 lb.	\$0.76	\$19.40	\$0.7760	\$19.40
			4,000 ea.	\$20.44		100.0 lb.	\$0.82	\$81.75	\$0.8175	\$81.75
Tomato Grape Fresh	10/16/2008	489796	12,000 pint	\$1.62		12,000 pint	\$1.62	\$19.26	\$1.6200	\$19.26
Jimmes Grocers	10/20/2008	489962	8,000 pint	\$1.71		8,000 pint	\$1.71	\$13.28	\$1.7133	\$13.28
			18,000 pint	\$1.59		18,000 pint	\$1.59	\$28.53	\$1.5900	\$28.53
Zucchini Green Fresh	10/14/2008	489046	20,000 lb.	\$0.83		20,000 lb.	\$0.83	\$16.56	\$0.8276	\$16.56
Jimmes Grocers	10/20/2008	489962	20,000 lb.	\$0.74		20,000 lb.	\$0.74	\$14.88	\$0.7426	\$14.88
			17,857 kg	\$1.76		40.0 lb.	\$0.79	\$31.40	\$0.7650	\$31.40
								\$0.2283		\$0.2283
<b>Misc</b>										
<b>Chemicals and Cleaning</b>										
Scouring Pad Green Nylon 100	10/17/2008	602037	2,000 pak.	\$4.14		2,000 pak.	\$4.14	\$8.28	\$4.1400	\$8.28
Fresh Food Supply			2,000 pak.	\$4.14		2,000 pak.	\$4.14	\$8.28	\$4.1400	\$8.28

## Buy From Who You Want - How You Want

- Purchase an item in multiple case sizes
- Know which case sizes are purchased regularly
- Create templates for routine purchases
- Searching by name or order code

Description	Supplier	Order Code	Barcode	Purchase Price	Adj. Case Cost	Case Qty.
Beverage						
Coffee	Freds Food Supply	91644		\$39.95 cs.	\$39.95 cs.	64,000 bag
Coffee filters	Reliable Food Supplies	556123		\$5.00 cs.	\$5.00 cs.	1,000 bag
Juice-Orange	Freds Food Supply			\$31.56 cs.	\$31.56 cs.	12,000 pak.
Pop syrup	Franks Dairy	345		\$66.52 cs.	\$66.52 cs.	1,000 bag
Str sticks	Freds Food Supply	502278		\$8.13 cs.	\$8.13 cs.	1,000 cs.
Straws 8"	Freds Food Supply	512541		\$10.60 cs.	\$10.60 cs.	9,000 box
Sugar portion	Freds Food Supply	603043		\$17.49 cs.	\$17.49 cs.	1,000 cs.
Sugar twin portion	Freds Food Supply	628024		\$24.30 cs.	\$24.30 cs.	6,000 bag
Tea	Freds Food Supply	634766		\$8.08 cs.	\$8.08 cs.	1,000 toux
Bread						
Bread Crumbs	Freds Food Supply	33		\$9.09 cs.	\$9.09 cs.	1,000 pak.
Bun Beef dip	Bakery Shop	22	12345	\$2.90 cs.	\$2.90 cs.	12,000 ea.
Buns-Hamburger	Bakery Shop	667		\$2.99 cs.	\$2.99 cs.	18,000 ea.
Buns-Kaiser	Freds Food Supply	506018		\$2.83 cs.	\$2.83 cs.	18,000 ea.
Dairy						
Butter	Franks Dairy	2558		\$2.97 cs.	\$2.97 cs.	1,000 lb.
Cheese-Feta	Freds Food Supply	55224		\$22.59 cs.	\$22.59 cs.	1,000 pak.

Call us today at **1-888-798-5555** to order OC Pro and **TAKE CONTROL** with **OPTIMUM CONTROL**.

108 Regent Ave East  
Winnipeg, MB  
R2C 0C1 Canada

[www.tracrite.net](http://www.tracrite.net)  
[sales@tracrite.net](mailto:sales@tracrite.net)  
1-888-798-5555



# OPTIMUM CONTROL

108 Regent Ave East  
Winnipeg, MB  
R2C 0C1 Canada

www.tracrite.net  
sales@tracrite.net  
1-888-798-5555



# Clear, Concise REPORTING

*It's all about getting the information you need!*

## Facilitates Decision Making

- Generate reports with just a few simple clicks of a mouse
- Filter reports to see the information you want
- Export reports to many popular file formats
- Over 70 reports available organized by category

Joe's Fine Dining (JOES)

### Usage Summary - by Count Amounts

9/29/2009 11:52:54

From: Monday, March 09, 2009  
To: Monday, March 23, 2009

Sales: \$24,873.04

Actual Cost of Sales: \$7,152.84 28.76%  
Ideal Cost of Sales: \$8,849.43 27.54%  
Variance: \$333.35 1.22%  
Waste: \$0.00 0.00%  
Net Variance: \$333.35 1.22%

Note: Inventory amounts that have been adjusted are marked with \*. See the "review inventory report".  
Ideal amounts marked with \* have been actualized. i.e. Ideal = Actual

Description	UOM	Opening		Period		Ending		Actual Usage		Ideal Usage		Waste		Difference	
		Inventory	Purchases	Inventory	Inventory	Amount	Value	Amount	Value	Amount	Value	Amount	Value	Amount	Value
<b>Food Sales: Not Detailed</b>															
<b>Beverage</b>															
Coffee	bag	320.000	0.000	283.500	36.500	330.27	36.534	330.29	0.000	330.29	0.000	0.000	0.000	-0.034	(\$0.02)
Coffee filters	bag	5.000	0.000	5.000	0.000	\$0.00	0.000	\$0.00	0.000	\$0.00	0.000	0.000	0.000	-0.000	(\$0.00)
Juice-Orange	gal.	30.000	0.000	27.680	6.500	622.30	0.471	622.20	0.000	622.20	0.000	0.000	0.000	0.000	\$0.00
Pop syrup	bag	10.000	3.000	7.870	5.300	\$355.55	5.354	\$357.15	0.000	\$357.15	0.000	0.000	0.000	-0.024	(\$1.60)
Hot works	re.	3.000	0.000	3.000	0.000	\$0.00	0.000	\$0.00	0.000	\$0.00	0.000	0.000	0.000	0.000	\$0.00
Straw S	box	45.000	0.000	45.000	0.000	\$0.00	0.000	\$0.00	0.000	\$0.00	0.000	0.000	0.000	0.000	\$0.00
Sugar portion	ck.	3.000	0.000	2.809	0.191	\$3.34	0.201	\$3.52	0.000	\$3.52	0.000	0.000	0.000	-0.010	(\$0.18)
Sugar Twin portion	bag	12.000	0.000	12.000	0.000	\$0.00	0.000	\$0.00	0.000	\$0.00	0.000	0.000	0.000	-0.076	(\$0.31)
Tea	box	3.000	0.000	3.000	0.000	\$0.00	0.000	\$0.00	0.000	\$0.00	0.000	0.000	0.000	0.000	\$0.00
<b>Beverage Totals</b>															
				1.67%	\$416.51	1.68%	\$418.83	0.00%	\$0.00	-0.01%	(\$2.32)				
<b>Bread</b>															
Bread Crumbs	gal.	2.000	2.000	3.000	1.000	\$10.00	1.110	\$11.10	0.000	\$0.00	0.000	0.000	0.000	-0.110	(\$1.11)
Bun-Beef Op	ea	24.000	252.000	40.000	238.000	\$57.10	238.000	\$57.10	0.000	\$0.00	0.000	0.000	0.000	0.000	\$0.00
Buns-Hamburger	ea	54.000	1044.000	143.000	965.000	\$150.71	1044.000	\$173.50	0.000	\$0.00	0.000	0.000	0.000	-89.000	(\$14.79)
Buns-Kaiser	ea	30.000	0.000	30.000	0.000	\$0.00	0.000	\$0.00	0.000	\$0.00	0.000	0.000	0.000	0.000	\$0.00
<b>Bread Totals</b>															
				0.91%	\$725.89	0.93%	\$741.79	0.00%	\$0.00	-0.06%	(\$15.90)				

## Account For All Of Your Stock

- Usage Summary – Actual versus theoretical usage on every item in your inventory
- Item Activity – Displays perpetual inventory quantities and values
- Identify what was purchased from which supplier and how much you paid for it

Joe's Fine Dining (JOES)

### Period Sales Mix

9/30/2009 09:16:50

From: Sunday, March 01, 2009  
To: Tuesday, March 31, 2009

Gross Sales for Period: \$52,517.50  
Desired Percent: 30.00%

Item Description	OC Price	Avg Price	Sold	Sales Total	% of Sales	Cost	%	Gross Margin	
<b>Food</b>									
<b>Add on</b>									
W/Soup Cup	\$1.50	\$1.50	197.00	\$295.50	0.563%	\$94.40	31.95%	\$201.10	
<b>Sales Group Total:</b>				<b>197.00</b>	<b>\$295.50</b>	<b>0.563%</b>	<b>\$94.40</b>	<b>31.95%</b>	<b>\$201.10</b>
<b>Appetizer</b>									
SPINACH SAL	\$9.50	\$9.50	216.00	\$2,052.00	3.907% (K)	\$670.12	32.66%	\$1,381.88	
<b>Sales Group Total:</b>				<b>216.00</b>	<b>\$2,052.00</b>	<b>3.907%</b>	<b>\$670.12</b>	<b>32.66%</b>	<b>\$1,381.88</b>
<b>Beverage</b>									
Coffee-6oz Cup	\$1.00	\$1.00	534.00	\$534.00	1.017%	\$82.82	15.51%	\$451.18	
MILLER LITE	\$3.75	\$3.75	331.00	\$1,241.25	2.363%	\$129.09	10.40%	\$1,112.16	
Pop-10 oz Glass	\$1.25	\$1.25	3976.00	\$4,970.00	9.411%	\$661.90	13.12%	\$4,308.00	
Red Wine-6oz Glass	\$4.25	\$4.25	187.00	\$794.75	1.513% (K)	\$306.64	48.65%	\$488.11	
White Russian	\$4.25	\$4.25	263.00	\$1,117.75	2.128%	\$254.48	22.77%	\$863.27	
White Wine-6oz Glass	\$4.25	\$4.25	256.00	\$1,088.00	2.072% (K)	\$349.59	32.13%	\$738.41	
<b>Sales Group Total:</b>				<b>5546.00</b>	<b>\$9,744.50</b>	<b>18.555%</b>	<b>\$1,854.53</b>	<b>19.03%</b>	<b>\$7,889.97</b>
<b>Combination Dish</b>									
Catering dinner #1	\$5.99	\$18.00	194.00	\$3,492.00	6.649% (K)	\$1,088.71	31.18%	\$2,403.29	
Cheeseburger Combo	\$4.99	\$4.99	490.00	\$2,445.10	4.656% (K)	\$889.62	36.38%	\$1,555.48	
Hamburger Combo	\$6.25	\$3.99	492.00	\$1,963.08	3.738% (K)	\$761.06	38.77%	\$1,202.02	
<b>Sales Group Total:</b>				<b>1176.00</b>	<b>\$7,900.18</b>	<b>15.043%</b>	<b>\$2,739.39</b>	<b>34.67%</b>	<b>\$5,160.79</b>

## Know Where Opportunities Exist

- Cost Analysis – Analyze cost of sales trends for up to four periods
- Budget Variance – Identifies actual versus budgeted values per GL account
- Menu Engineering – Analyze the profitability and popularity of all menu items

Joe's Fine Dining (JOES)

### Menu Engineering Worksheet

9/30/2009 09:12:32

From: Sunday, March 01, 2009  
To: Tuesday, March 31, 2009

Gross Sales for Period: \$52,517.50

Note: This report calculates a menu product's Popularity (Menu Popularity Factor) and Profitability (Average Item Profit) within the group.

Item Description	Sold	Popularity %	Selling Price	Current Cost	Margin %	%	Sales	Cost	Profit	Analysis: Profitability	Popularity	Menu Item Class
<b>Food</b>												
<b>Add-on</b>												
W/Soup Cup	197.00	100.000%	\$1.50	\$0.47	\$1.026	31.95%	\$295.50	\$94.40	\$201.10	HIGH	HIGH	Star
<b>Averages:</b>				<b>\$1.50</b>	<b>\$0.47</b>	<b>\$1.021</b>	<b>31.95%</b>	<b>\$295.50</b>	<b>\$94.40</b>	<b>\$201.10</b>	"Based on averages"	
				Average Item Profit: \$1.021 Menu Popularity Factor: 80.00%								
<b>Appetizer</b>												
SPINACH SAL	216.00	100.000%	\$9.50	\$3.10	\$6.396	32.66%	\$2,052.00	\$670.12	\$1,381.88	LOW	HIGH	Workhorse
<b>Averages:</b>				<b>\$9.50</b>	<b>\$3.10</b>	<b>\$6.396</b>	<b>32.66%</b>	<b>\$2,052.00</b>	<b>\$670.12</b>	<b>\$1,381.88</b>	"Based on averages"	
				Average Item Profit: \$6.296 Menu Popularity Factor: 80.00%								
<b>Beverage</b>												
Coffee-6oz Cup	534.00	9.629%	\$1.00	\$0.16	\$0.845	15.51%	\$534.00	\$82.82	\$451.18	LOW	LOW	Dog
MILLER LITE	331.00	5.969%	\$3.75	\$0.39	\$3.360	10.40%	\$1,241.25	\$129.09	\$1,112.16	HIGH	LOW	Challenge
Pop-10 oz Glass	3976.00	71.617%	\$1.25	\$0.19	\$1.059	13.12%	\$4,970.00	\$661.90	\$4,308.00	LOW	PLUM	Workhorse
Red Wine-6oz Glass	187.00	3.372%	\$4.25	\$2.07	\$2.182	48.65%	\$794.75	\$306.64	\$488.11	HIGH	LOW	Challenge
White Russian	263.00	4.742%	\$4.25	\$0.88	\$3.368	22.77%	\$1,117.75	\$254.48	\$863.27	HIGH	LOW	Challenge
White Wine-6oz Glass	256.00	4.618%	\$4.25	\$1.21	\$3.044	32.13%	\$1,088.00	\$349.59	\$738.41	HIGH	LOW	Challenge
<b>Averages:</b>				<b>\$3.13</b>	<b>\$0.24</b>	<b>\$2.893</b>	<b>19.83%</b>	<b>\$9,744.50</b>	<b>\$1,854.53</b>	<b>\$7,889.97</b>	"Based on averages"	
				Average Item Profit: \$1.423 Menu Popularity Factor: 43.33%								

Call us today at **1-888-798-5555** to order **OC Pro** and **TAKE CONTROL** with **OPTIMUM CONTROL**.

# OPTIMUM CONTROL

108 Regent Ave East  
Winnipeg, MB  
R2C 0C1 Canada

www.tracrite.net  
sales@tracrite.net  
1-888-798-5555



# CATERING & BANQUETS

*It's all about taking the guess work out of event management*

## Plan And Cost Any Banquet

- Detail event time, serve time and duration
- Base quote on Selling price, Cover Price or even Cost of sales percentage
- Extract stock from inventory once event is complete

## Confirm The Event

- Print a confirmation so the client can sign off
- Display any special instructions required
- Keep a detailed file of all events

## Know What You Need

- Print a shopping list for each event
- View a scaled listing of all preps required
- Automatically create an order ready to upload to suppliers

Call us today at **1-888-798-5555** to order OC Pro and **TAKE CONTROL** with **OPTIMUM CONTROL**.

# OPTIMUM CONTROL

## WE KNOW INVENTORY! WE SUPPORT INVENTORY!

*Over the last 13 years Optimum Control has been helping restaurants around the world to increase profits and track inventory more effectively!*



### ***DIFFERENT PRODUCTS AVAILABLE TO MEET ALL OF YOUR NEEDS***



#### ***Optimum Control Professional (OCPRO)***

Developed for customers who want full functionality complete with recipe costing, inventory control, ordering, purchasing, catering and buffets. Reporting includes menu analysis, actual versus theoretical usage and over 60 more reports.



#### ***Optimum Control Premier (OCPREMIER)***

Developed for customers such as hotels, golf courses and resorts that need all the functionality of OCPRO with the addition of multiple profit centers, stock requisitions, consolidated ordering, easy to use stock transfers and usages per area.



#### ***Optimum Control Express (OCEXPRESS)***

Developed for customers who only want inventory counting and valuation, recipe costing and theoretical usages from the POS system. This product will, like OCPRO, calculate ideal food cost as well as analyze menu profitability and popularity.



#### ***Optimum Control Enterprise (OCENTERPRISE)***

Web based application designed for chain operations who, first and foremost, want to manage items and recipes from a central database and sync with all stores. Consolidated reporting for all stores, selected regions or even down to the store level displaying usages, purchases and even sales mix information.

***ASK ABOUT OCMOBILE FOR POCKET PC.***

***All versions are compatible with most popular POS Systems***

108 Regent Ave East  
Winnipeg, MB  
R2C 0C1 Canada

[www.tracrite.net](http://www.tracrite.net)  
[sales@tracrite.net](mailto:sales@tracrite.net)  
1-888-798-5555

